

Using These Measurements

This document contains the approximate room measurements for Gaston. We recommend that it be viewed in Adobe Acrobat, which can be downloaded at Adobe's website, www.adobe.com/reader.

Because there are many configurations available for every area, these layouts and measurements should be seen as general guidelines. All measurements and drawings are made to scale, however the drawings may not reflect all aspects of every room. There may be architectural features that do not allow furniture to fit into a space. We recommend saving all receipts for purchased furnishings just in case they won't fit.

The Housing and Residence Life main office is available for questions at reslife@samford.edu or (205)726-2956. We will do our best to provide any details or measurements we currently possess but we cannot promise to provide answers to all possible questions. Visiting rooms before move-in is not allowed.

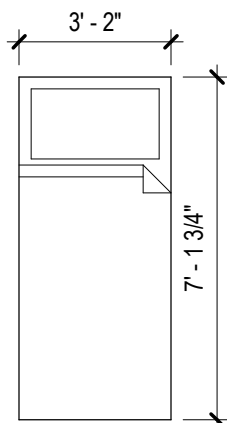
Finding Your Room Configuration

In order to find the configuration for your room, we recommend you utilize the Find command built into most PDF viewers. In Adobe Acrobat, use your mouse to click on Find under the Edit menu. You can also press Control+F if you use Windows or Command+F if you use a Mac.

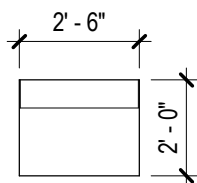
If you were searching for Gaston 302, type in "302" and hit Enter. It should take you to the page that contains the measurements for your room. You can verify this by looking at the bottom left of the page under the "Configuration Notes"; it will list all rooms which that configuration is applicable to.

Other Tips

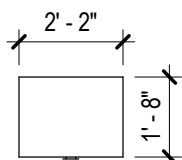
All Samford owned furniture must stay in the room. Residents are welcome to bring in their own furniture and rearrange provided furniture but the Samford owned furniture may not leave the room or be stored elsewhere. Furniture may not be in the same layout as the drawing at move-in.



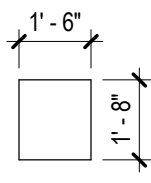
STANDARD BED (x4)



DESK (x4)



CHEST 2-DRAWER (x8)



BOOKSHELF 1-DRAWER (x4)

Configuration Notes:

Units:

Level 1 - 105, 107, 111, 112, 113, and 114

Level 2 - 202, 203, 204, 205, 207, 211, 213, 214, 219, 220, 221, 222, 223, 224, 227, 228, 229, 230, 232, 236, 238, 239, 244, 245, 246, 247, 248, and 249

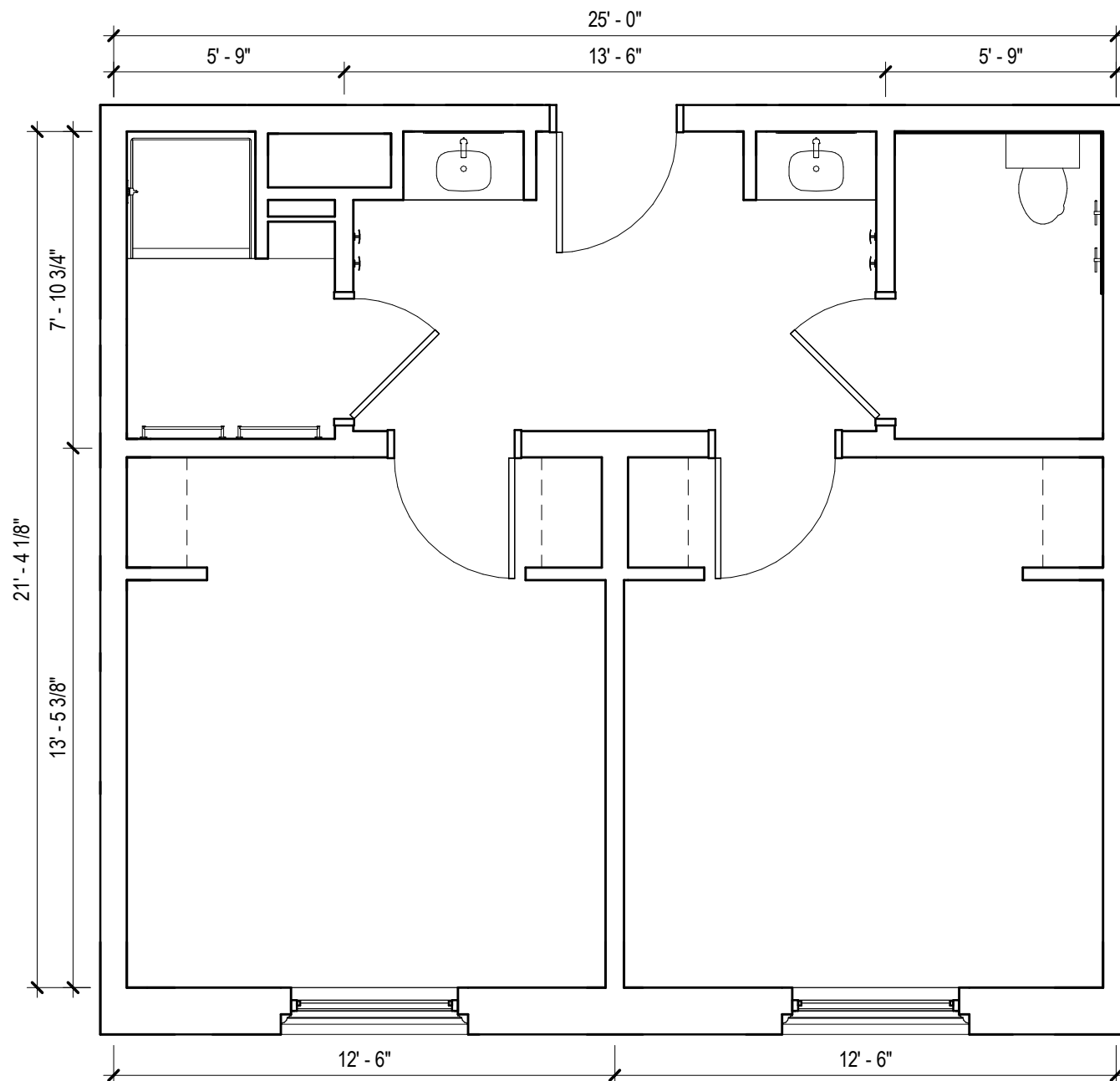
Level 3 - 302, 303, 304, 305, 307, 311, 313, 314, 319, 320, 321, 322, 323, 324, 327, 328, 329, 330, 332, 336, 338, 339, 344, 345, 346, 347, 348, and 349

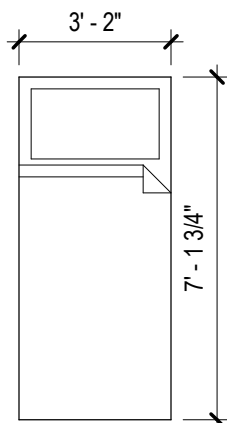
Level 4 - 402, 403, 404, 405, 407, 411, 413, 414, 419, 420, 421, 422, 423, 424, 427, 428, 429, 430, 432, 336, 438, 439, 444, 445, 446, 447, 448, and 449

Level 5 - 502, 507, 519, 520, 521, 522, 523, 524, 527, 529, 544, 545, 546, 547, 548, and 549

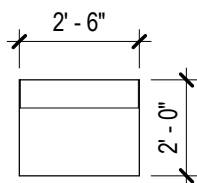
All drawings are 1/4" = 1'-0" scale

Dimensions are meant to be general figures and may not be exact

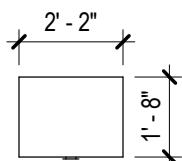




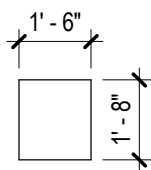
STANDARD BED (x4)



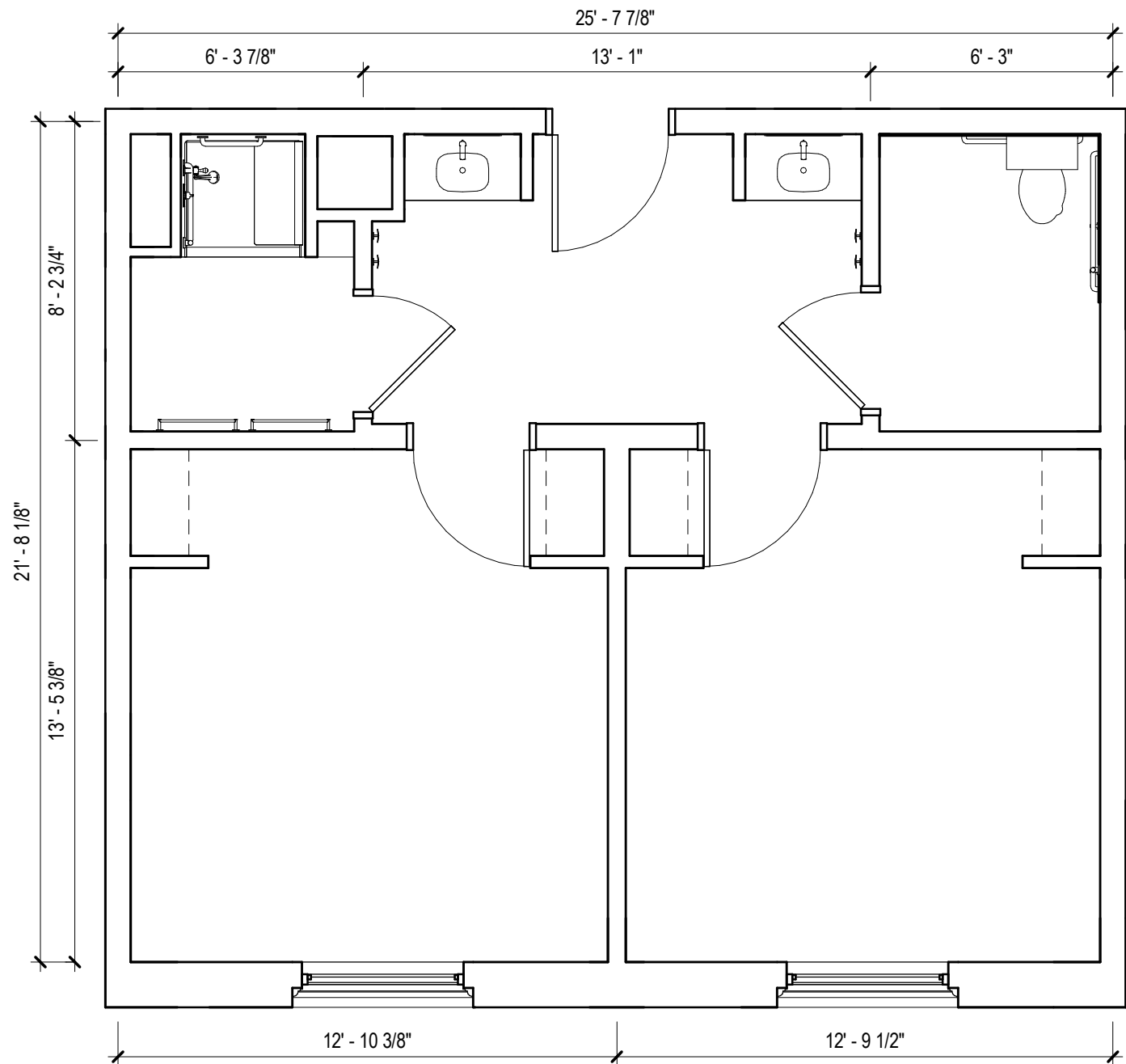
DESK (x4)



CHEST 2-DRAWER (x8)



BOOKSHELF 1-DRAWER (x4)



Configuration Notes:

Units:

Level 1 - 109

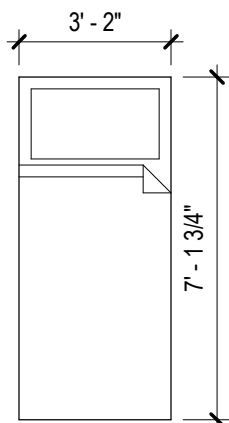
Level 4 - 409 and 434

Level 5 - 509 and 534

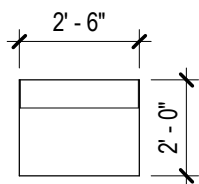
All drawings are 1/4" = 1'-0" scale

Dimensions are meant to be general figures and may not be exact

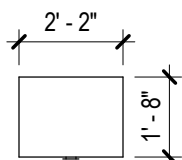




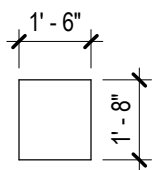
STANDARD BED (x4)



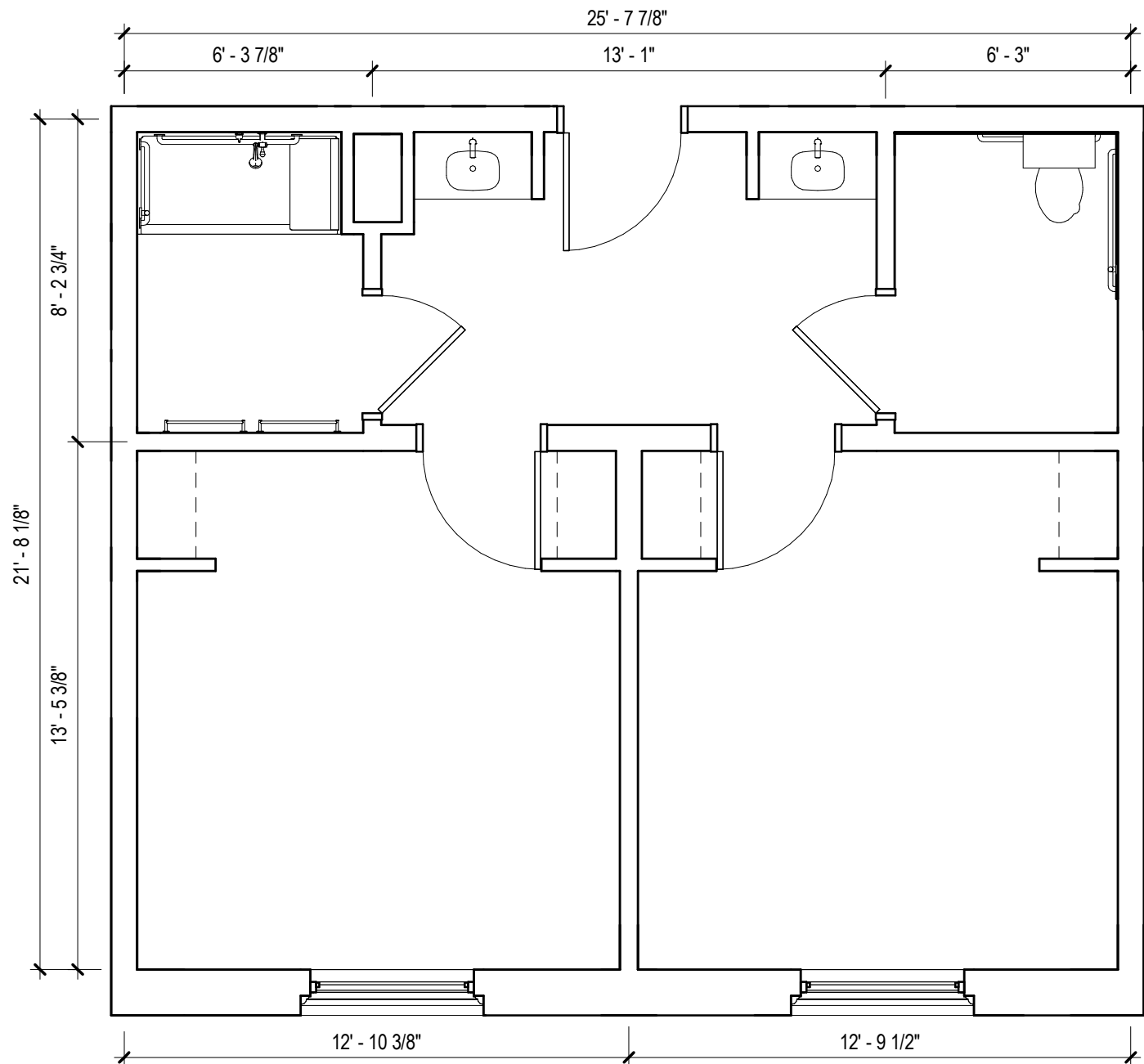
DESK (x4)



CHEST 2-DRAWER (x8)



BOOKSHELF 1-DRAWER (x4)



Configuration Notes:

Units:

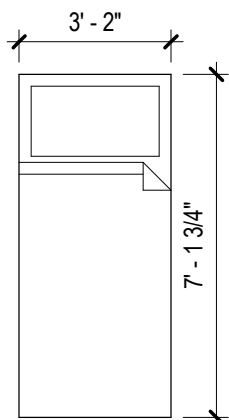
Level 2 - 209 and 234

Level 3 - 309 and 334

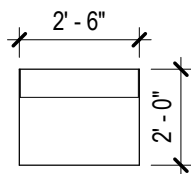
All drawings are 1/4" = 1'-0" scale

Dimensions are meant to be general figures and may not be exact

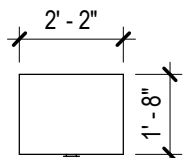




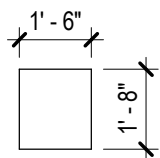
STANDARD BED (x1)



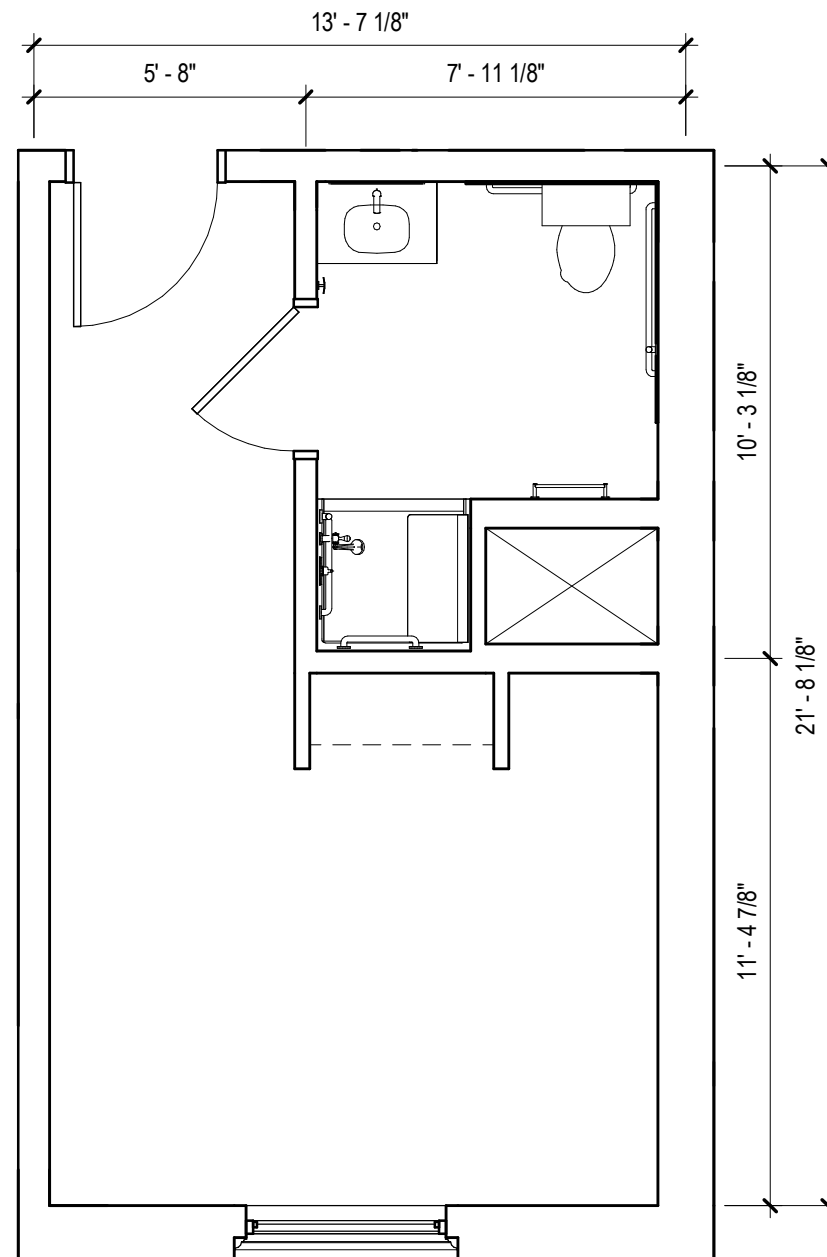
DESK (x1)



CHEST 2-DRAWER (x2)



BOOKSHELF 1-DRAWER (x1)



Configuration Notes:

Units:

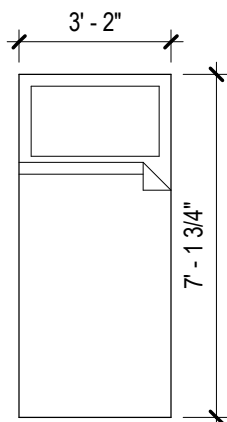
Level 2 - 201 and 226

Level 4 - 401 and 426

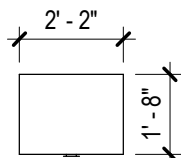
All drawings are 1/4" = 1'-0" scale

Dimensions are meant to be general figures and may not be exact

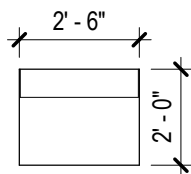




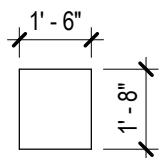
STANDARD BED (x1)



CHEST 2-DRAWER (x2)



DESK (x1)



BOOKSHELF 1-DRAWER (x1)

Configuration Notes:

Units:

Level 1 - 103

Level 2 - 210, 218, 235 and 243

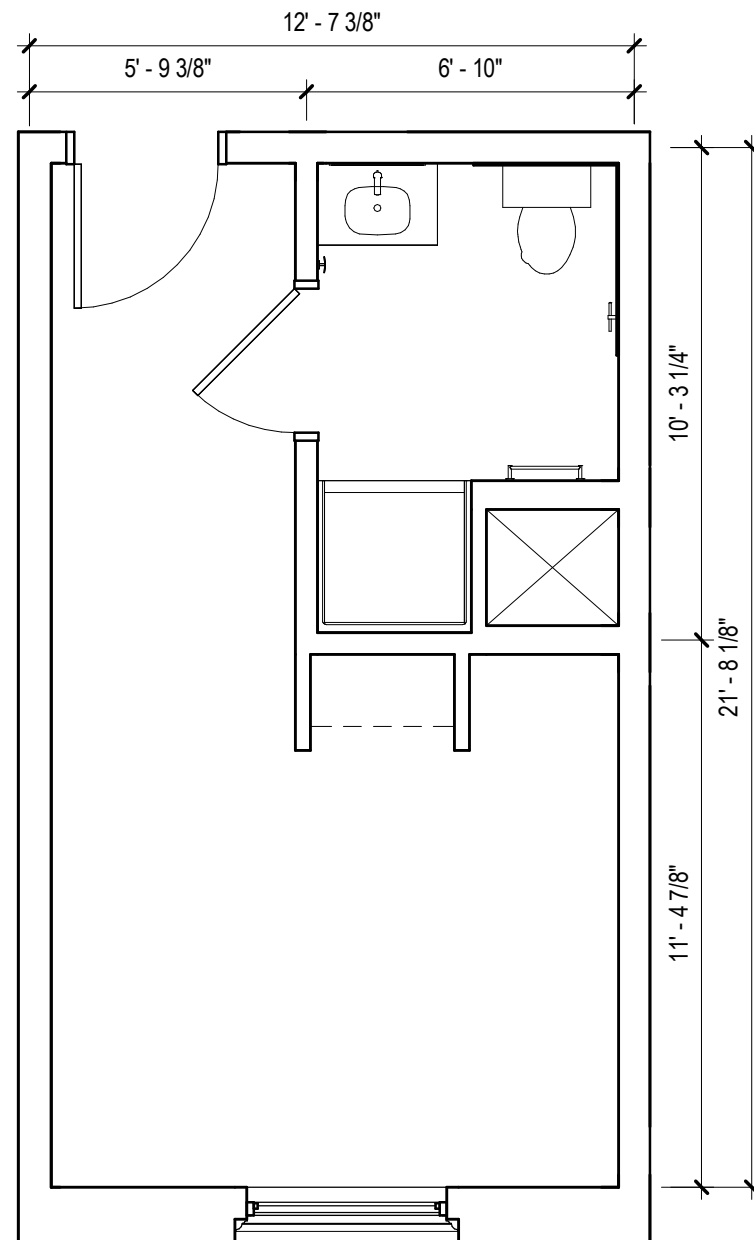
Level 3 - 310, 318, 335 and 343

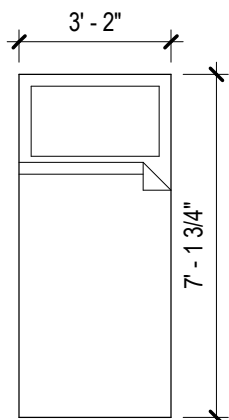
Level 4 - 410, 418, 435 and 443

Level 5 - 518 and 543

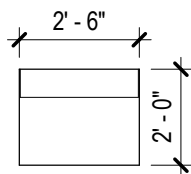
All drawings are 1/4" = 1'-0" scale

Dimensions are meant to be general figures and may not be exact

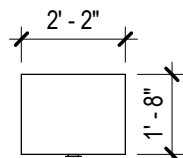




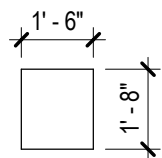
STANDARD BED (x1)



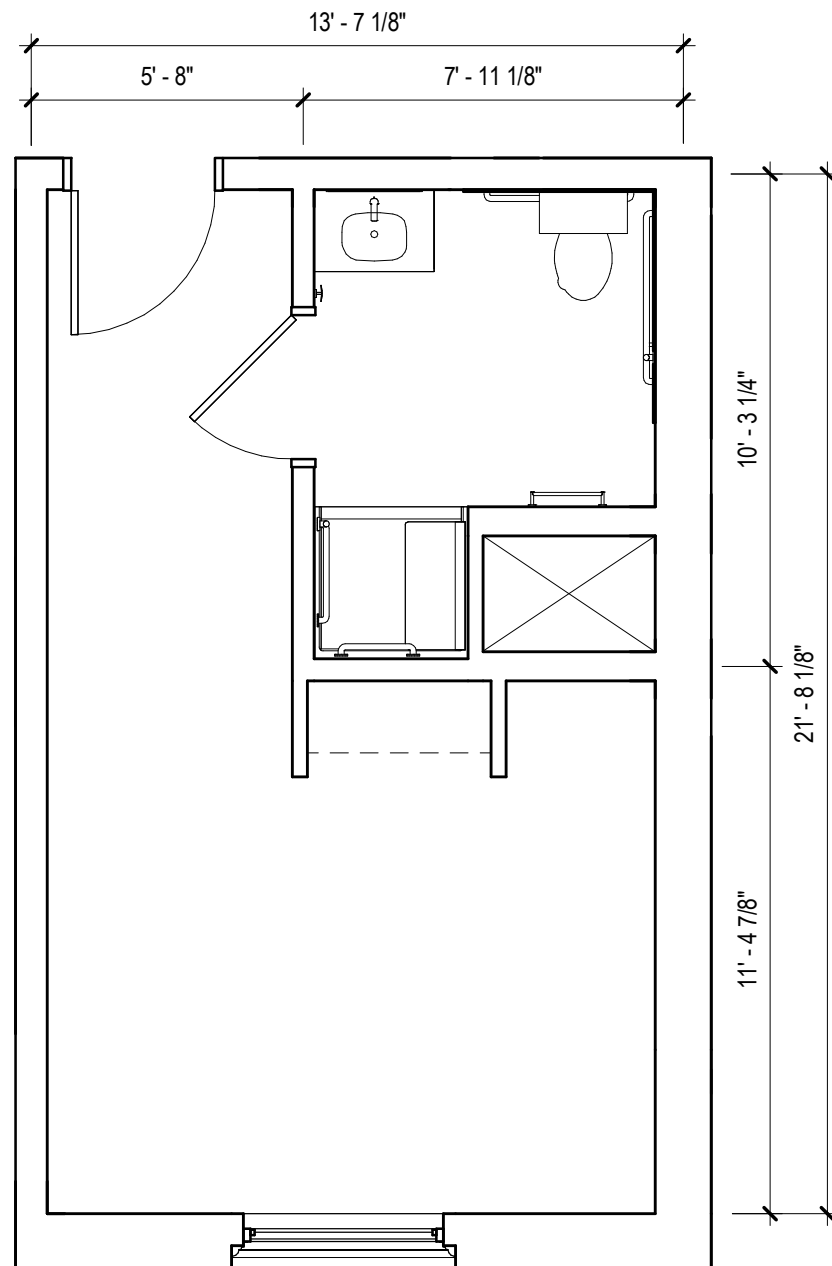
DESK (x1)



CHEST 2-DRAWER (x2)



BOOKSHELF 1-DRAWER (x1)



Configuration Notes:

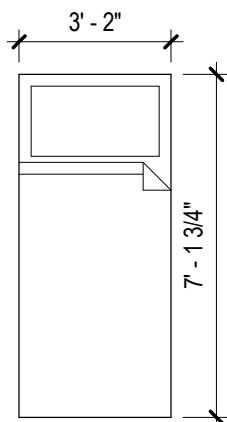
Units:

Level 3 - 301 and 326

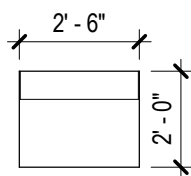
All drawings are 1/4" = 1'-0" scale

Dimensions are meant to be general figures and may not be exact

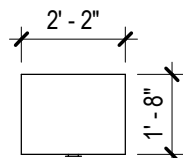




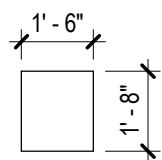
STANDARD BED (x1)



DESK (x1)



CHEST 2-DRAWER (x2)



BOOKSHELF 1-DRAWER (x1)

Configuration Notes:

Units:

Level 2 - 212, 217, 225, 237, 242 and 250

Level 3 - 312, 317, 325, 337, 342 and 350

Level 4 - 412, 417, 425, 437, 442 and 450

Level 5 - 517, 525, 542 and 550

All drawings are 1/4" = 1'-0" scale

Dimensions are meant to be general figures and may not be exact

